

**Légende / Legend**

Aux1	Configurable command Commande configurable	R1	Valve open Vanne ouverte
Aux2	Configurable command Commande configurable	R2	Valve closed Vanne fermée
C	Closing command Commande fermeture	R3	Configurable relay Relais configurable
O	Opening command Commande ouverture	RD	Fault relay terminal 26-28 closed= actuator available
S	Stop		
TH	Thermal protection Protection thermique		

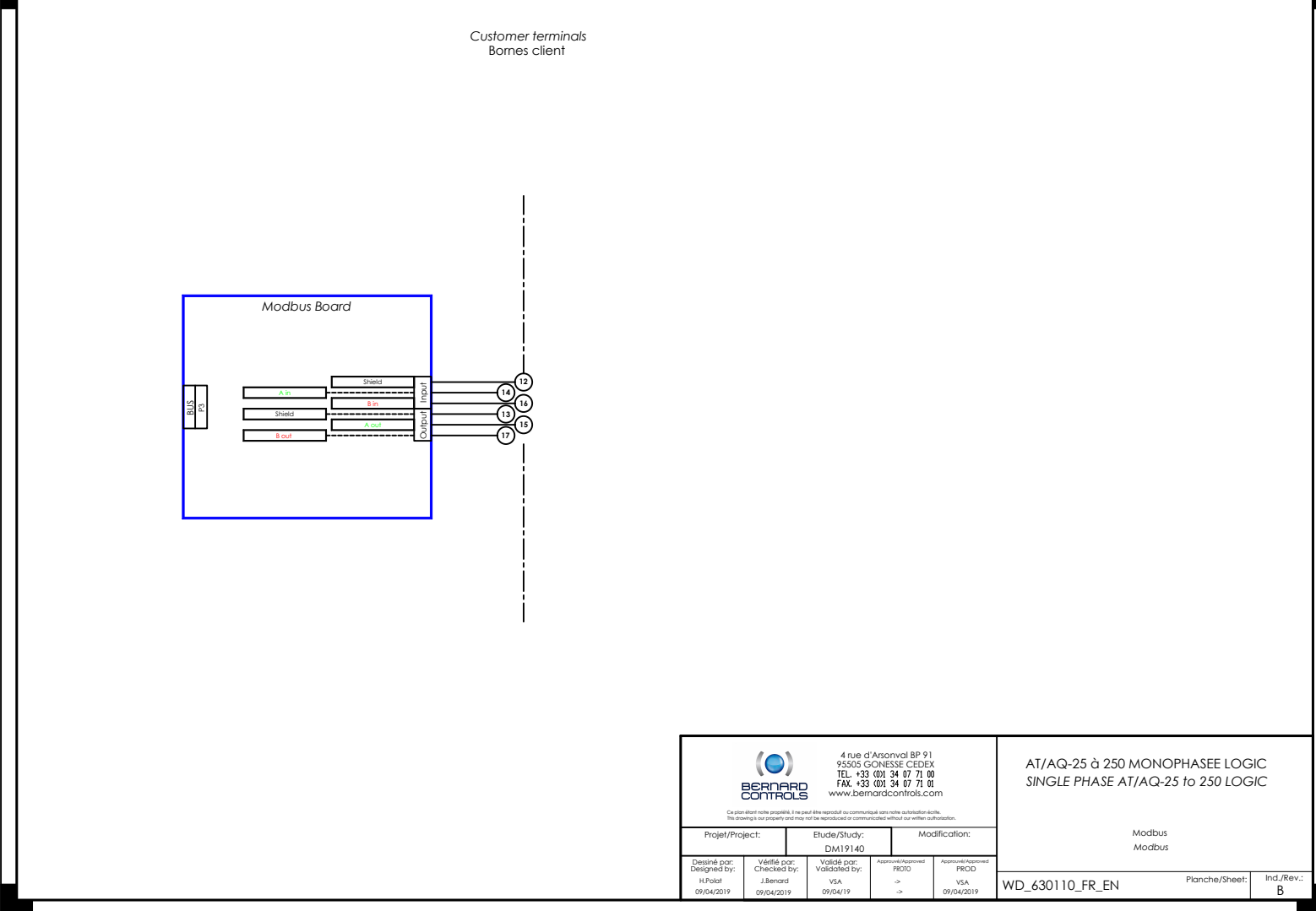
**BERNARD CONTROLS**  
4 rue d'Arsonval BP 91  
95505 GONESSE CEDEX  
TEL. +33 (0)1 34 07 71 00  
FAX. +33 (0)1 34 07 71 01  
www.bernardcontrols.com

**AT/AQ-25 à 250 MONOPHASEE LOGIC**  
**SINGLE PHASE AT/AQ-25 to 250 LOGIC**

Modbus  
Modbus

Projet/Project:	Etude/Study:	Modification:
Designé par: H.Polat 09/04/2019	Vérifié par: J.Bernard 09/04/2019	Validé par: VSA 09/04/19
Approved/Approved PROD	Approved/Approved PROD	

WD\_630110\_FR\_EN    Planche/Sheet:    Incl./Rev.:  
B



**BERNARD CONTROLS**  
4 rue d'Arsonval BP 91  
95505 GONESSE CEDEX  
TEL. +33 (0)1 34 07 71 00  
FAX. +33 (0)1 34 07 71 01  
www.bernardcontrols.com

**AT/AQ-25 à 250 MONOPHASEE LOGIC**  
**SINGLE PHASE AT/AQ-25 to 250 LOGIC**

Modbus  
Modbus

Projet/Project:	Etude/Study:	Modification:
Designé par: H.Polat 09/04/2019	Vérifié par: J.Bernard 09/04/2019	Validé par: VSA 09/04/19
Approved/Approved PROD	Approved/Approved PROD	

WD\_630110\_FR\_EN    Planche/Sheet:    Incl./Rev.:  
B